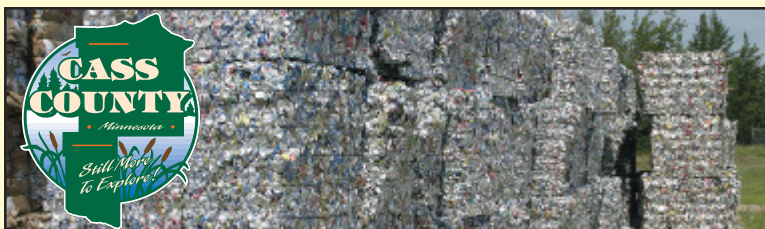


SOLID WASTE & RECYCLING



**Cass County
Environmental Services**

**218-547-7241
www.co.cass.mn.us**

Cass County Operated Transfer Sites

A	Pine River Transfer Station 1705 State 371 SW, Backus MN (2 miles north of Pine River on Hwy 371)	888-910-2425, ext. 1 218-587-3500
	Summer: Mon-Fri 8-5:00, Sat. 8-12 Winter: Mon-Fri 8-4:00, Sat. 8-12	
B	Walker/Hackensack Transfer Site 4524 44th ST NW, Hackensack 56452 (2.5 miles N of Hackensack on Hwy 371)	218-675-6807
	Summer: (April 1 to Sept 30) Mon, Tue, Fri, Sat 9-5, Sun 12-5 Winter: (Oct 1 to Mar 31) Sat 9 - 5	
C	May Township Transfer Site 4972 112th ST SW, Pillager MN (2 1/2 miles W of junction of Cass Co 1 & 34)	218-746-3593
	Year Round: Mon, Wed 3-7, Sat 9-5	

Independently Operated Transfer Sites *(Serving Cass County)*

D	Longville (Slagle) Transfer Site 3246 Cty 7 NE Remer, MN 5 miles east of Longville on Cass Co 7	218-363-2246
	Summer: Mon, Tues, Wed, Fri, Sat 10-4 closed Thurs & Sun.	
E	Leech Lake Transfer Station 6250 152nd ST NW, Cass Lake	218-335-4160
	Summer/Winter: Mon-Fri 8-5:30, Sat. 8-4:30	
F	Crooked Lake Transfer Site 509 State 6 NE, Outing, MN, Crooked Lake Townhall (1/2 mile north of Outing on Hwy 6)	218-838-1619
	Summer: (Memorial Day-Labor Day) Mon 10-12, Wed 4-6, Sat 9:30-12, Sun 12-4 Winter: (Labor Day-Memorial Day) Sat 9:30-12, Mon 10-12	

Note: *Independently Operated Transfer Sites may require fees for services that county owned facilities do not.*

DEMO DISPOSAL SITES	
Grinning Bear Demo Disposal Pine River - Pequot Lakes Area	218-587-4990
Hengel Demo Disposal Gull Lake Area - Pine River - Pequot Lakes Area	218-746-3355
Hoss's Demo Disposal Walker Area	218-547-3655
Slagel Demo Longville - Remer Area	218-363-2246

METALS & AUTO SALVAGE	
Pine River Iron & Metal Pine River	218-587-2700

ROLL-OFF CONTAINERS FOR DEMO DEBRIS	
Blue Lakes Roll-Off Service, Brainerd	218-828-4558
Boxter, Inc., Akeley-Walker Area	218-652-4724
Cross Lake Roll-Off, Cross Lake	218-692-3902
Emily Roll-Off, Emily	218-821-3330
Grinning Bear Roll-Off, Pine River	218-587-4990
Hengel Roll-Off Gull Lake Area - Pine River - Pequot Lakes Area	218-746-3355
Nisswa Roll-Off Services, Nisswa	218-963-0014
North Country Roll-Off, Pequot Lakes	218-543-4701
Red Rock Roll-Off, Walker	218-547-0670
Slagle Demo, Longville	218-363-2246

LICENSED WASTE HAULERS	
American Disposal, Cass Lake - Outing - Remer	218-246-8729
Blue Lakes Disposal, Gull Lake	218-828-4558
Boxter, Inc., Akeley-Walker Area	218-652-4724
City Sanitary, Walker - Hackensack - Longville	218-547-3633
Long Prairie Sanitary Service, Long Prairie	320-732-6464
Nisswa Sanitation, Gull Lake	218-963-4758
Pequot Lakes Sanitation, Gull Lake	218-568-4630
Schopper Disposal, Cass Lake	218-335-6349
Waste Management, Southern Cass Co - Pillager	218-829-4155
Waste Mangement, NE Cass County	218-328-6212
Waste Partners, Pine River, Hackensack	218-587-8727



APPLIANCES

APPLIANCE DISPOSAL

Used appliances can be disposed of at the Pine River Transfer Station, Slagle's, May Township, and Walker/Hackensack transfer sites. One appliance per month is accepted at no charge to County residents. Please disable appliance mechanical latches

FURNITURE/APPLIANCE EXCHANGE

Cass County Environmental Service Department has initiated a program to keep good usable items from going to the landfill. If you have appliances or furniture that you no longer want that are in usable condition, try to sell them or give them to someone else or bring them to the County transfer sites listed below.

Items Wanted or to Donate?

If you have items to donate, or if you need furniture or appliances, you may stop at any of the participating transfer sites to pick up items at no cost. Items will be given away on a first come basis

No appointment is necessary, open during regular hours for each site. Stop at the office first and the attendant will assist you.

Please do not bring heavily soiled or broken items. These need to be placed in the appropriate garbage roll offs.

Furniture Exchange sites:

- Cass County Solid Waste Transfer Station
- Walker-Hackensack transfer site
- May Township transfer site

Contact Information

If you need more information call 218-547-7428 and leave a message.

Check listings on the Minnesota Materials Exchange website www.mnexchange.org



BATTERIES

Alkalines (Household)

Examples: AAA, AA, A, C, D, and nine volt batteries

Only this type of battery can be safely disposed of in the trash. Most, but not all of these batteries have the word 'alkaline' on the label.

Lead Acid (Automotive & Marine):

Also included in this category are some computer and office equipment batteries. Check on the label for the words lead-acid or Pb with a recycling symbol. This type

of battery can be recycled at any of the following sites:

- Exchange at store when new battery is purchased
- Bring to any Cass County Solid Waste Transfer Site
- Check with any automotive dealer or parts store

Nickel-Cadmium (Rechargeable):

These batteries containing nickel and cadmium are commonly found in portable telephones, some flashlights and toys, cordless appliances such as screwdrivers, drills, toothbrushes, dustbusters and camcorders as well as other devices. The words "rechargeable" or "Ni-Cad" may be on the battery, though in many cordless appliances, there is no label on the battery. Bring these batteries to any of these locations:

- Any of the County Transfer stations
- Participating Hardware Stores.

Lithium:

This type of battery is found in certain camera equipment and some wrist watches. Take these to the same places you take the Ni-Cads.



Mercury (Button types):

Button batteries are commonly found in watches, stopwatches, hearing aids, cameras, and musical greeting cards. They range in size from quarters and dimes to the tips of pencil erasers. These often contain mercury, silver, and chromium. They should be dropped off in the special collection boxes at any of these designated locations:



- Cass County Solid Waste transfer sites.
- Participating pharmacies and hardware stores.

CLOTHING AND LINEN

Clothing and linens may be dropped off free of charge at the Northern Cass Co. Developmental Achievement Center (DAC), located on CO Rd #12, south of Jimmy's Restaurant in Walker, or at the Pine River Transfer Station during regular business hours only. **DO NOT** leave boxes or bags of clothing at the gate or door. All clothing and linens must be clean and dry.

CONSTRUCTION AND DEMOLITION WASTE

Only building materials such as concrete, asphalt, shingles, wood, bricks and glass are accepted at local Construction and Demolition landfills. No paint, paint cans, liquid tar, caulk tubes, fluorescent bulbs, treated lumber, or household garbage is allowed.

See page one for a list of demo debris disposal contractors. Small quantities accepted at Walker-Hackensack and May Township sites.

ELECTRONICS (E-WASTE)



E-waste is any waste that has a circuit board or a cathode ray tube (CRT).

E-waste Household

Computers, Monitors, printers, TV's and other related electronic equipment (E-waste) may be taken to the Pine River Transfer

Station, and the following transfer sites: May Township, and Walker-Hackensack. There is no charge to Cass County residents to drop them off.

E-waste Business

Businesses are required to recycle their electronic equipment. E-waste may not be disposed of as a solid waste (e.g. landfilling or incineration). Contact the Minnesota Pollution Control Agency for a list of e-waste recyclers and for help with the regulations.

www.pca.state.mn.us/oca/market/markets/index.cfm

FLUORESCENT BULBS



Cass County residents and businesses are required to properly dispose of all types of used fluorescent light bulbs and high intensity discharge lamps.

Residents may bring their compact and regular fluorescent bulbs at no charge to any of the Cass County transfer sites,

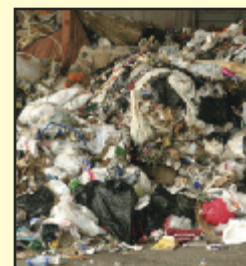
including: Walker-Hackensack, Leech Lake Tribal Solid Waste, Pine River, May Township, Outing (Crooked Lake Twp.), or Slagle's by Longville. Bulbs may also be accepted at participating local hardware stores. A disposal fee may be charged at non-county sites.

Businesses may contact private contractors, including those listed below or may bring them directly to one of the county transfer stations. For large volumes call the numbers listed below to have your fluorescent bulbs picked up at your place of business.

For disposal of all other Mercury containing devices such as: thermostats, manometers, position sensitive switches (such as those found in washing machine lids and car trunk lights), thermometers with the "silvery" indicator liquid, thermostat probes, and various gauges. Please call the Household Hazardous Waste facility at 888-910-2425, ext #2 or 218-547-7241

GARBAGE

All garbage generated in the County comes to the main Cass County Transfer Station, north of Pine River on Hwy 371, where it is transferred to trucks that haul it to a sanitary landfill.



Residents may bring garbage directly to the transfer sites themselves or contract with a local waste hauler. (See page 1 for specific Transfer Site information and a list of Licensed Waste Haulers.)

Burning Barrels/ Open Burning

Using burning barrels for garbage disposal is illegal in Cass County. You must dispose of garbage at one of the transfer sites, or have it picked up by a licensed hauler. With few exceptions, building material wastes must go to Construction and Demolition sites.

The only material that can lawfully be burned with a DNR or USFS Burning Permit under certain conditions are brush, tree trimmings, and other vegetative material.



HOUSEHOLD HAZARDOUS WASTE (HHW)

Facility Location: Cass County Solid Waste Transfer Station, 2 miles north of Pine River on Hwy 371. Phone: 1-888-910-2425, ext. 2, or 218-587-3455. Please leave a message.

Household Hazardous Waste (HHW) is accepted at no charge to Cass County residents by appointment only. Generally drop-off appointments are scheduled for Thursdays. Other days may be scheduled if necessary. During the summer months, Mobile Hazardous Waste Collections are held in various locations throughout the County.

What is Household Hazardous Waste (HHW)?

Chemical products that have signal words on the labels such as Caution, Warning, Danger, Poison, Flammable, Combustible, and Corrosive.

These products include automotive, lawn and garden, home improvement and household cleaners. Examples include old gas, engine degreasers, old paint and paint products, pesticides, pool chemicals, stains, varnish, tar, oven cleaners, aerosol products, mothballs, glues, and drain cleaners.

Small businesses may qualify for another program to help them with hazardous waste disposal. Call the HHW number above for more details.

Good used paint and other products are available at the Pine River HHW facility in the Product Exchange Room.

Used motor oil and oil filters do not need to go through this program. Bring these items to any of the Cass County solid waste transfer sites at any time. Some area service stations and hardware stores also accept waste oil. Check with stores in your area for details.



MOTOR OIL/FILTERS & ANTI-FREEZE

Used Motor Oil may be dropped off during regular hours of operation at all transfer sites except Crooked lake. Residents may pour waste oil from their private containers into the designated used oil tank. Separate containers are available at each location for disposal of used oil filters.



Please **DO NOT MIX USED MOTOR OIL WITH USED ANTI-FREEZE.**

Each location has a separate container for disposal of Used Anti-Freeze.

SHARPS

Household syringe/lancets must be disposed of with household garbage, NOT with recyclables. Follow these guidelines to insure the safety of garbage haulers and solid waste facility workers:

- Place in puncture-resistant containers with secure lids or caps.
- Useable containers include coffee cans with reinforced or taped lids, plastic detergent bottles with screw caps.
- Put in garbage.

Special labels are available free of charge at transfer sites.



TIRES

Waste tires can be disposed of at the Pine River Transfer Station, Slagle Transfer Station, May Township, and Walker/Hackensack sites. Four (4) tires per month are accepted. Please remove tires from rim.

YARD WASTE AND COMPOSTING

It is illegal in Minnesota to dispose of yard waste in the garbage.

You can dispose of grass clippings, leaves, and pine needles at the following locations:

- Longville: Slagle Transfer Site
- Mark's Farm and Garden, Pine River, North of Hackensack
- Walker/Hackensack Transfer Site.

You can bring tree trimmings and brush to the Slagle and Walker/Hackensack locations.

Environmental Services encourages you to compost. For more information on how to start a compost pile or indoor worm composting, contact Environmental Services at 218-547-7241.



RECYCLING

Cass County now accepts all types of plastic bottles, tubs and lids!



Plastic containers numbered 1-7 are accepted at all recycling bins. ♻️ ♻️ ♻️



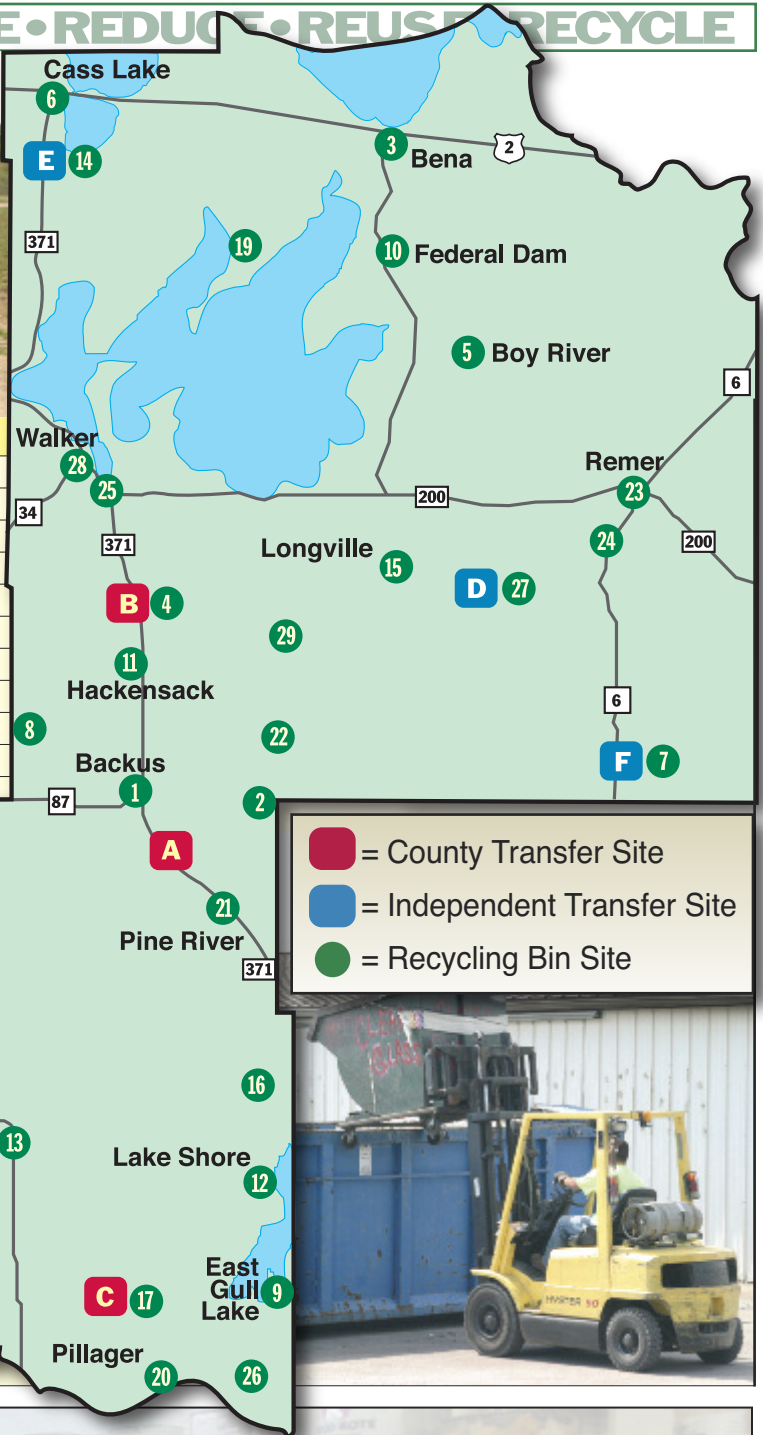
Place in the bins along with the glass, aluminum and steel cans.

- Check the bottom of your container to make sure it has the recycling symbol and # 1-7 inside the triangle. ♻️ ♻️ ♻️ ♻️ ♻️ ♻️ ♻️
- NO Film or Foam: this includes styrofoam, plastic bags, food wrap or other shrink wrap.
- NO plastic cups, plates or utensils
- NO motor oil or pesticide containers



Recycling Bins

AREA	LOCATION
1 Backus	City Hall
2 Barclay Twp	Harriet Club
3 Bena	Community Center
4 Birch Lake Twp	W/H Transfer Site
5 Boy River	City Hall
6 Cass Lake	1st St & Utley Ave NW
7 Crooked Lake Twp	Transfer Site
8 Deerfield Twp	Twp Hall
9 East Gull Lake	City Hall
10 Federal Dam	Municipal Building
11 Hackensack	Southside Store
12 Lake Shore	City Hall
13 Leader	Bear's Den
14 Leech Lake Transfer Site	South of Cass Lake
15 Longville	City Hall
16 Loon Lake Twp	Rager's Acres
17 May Twp	May Twp Transfer Site
18 Mckinley Twp	Elwell Store
19 Otertail Pen Twp	Town Hall
20 Pillager	Near Water Tower
21 Pine River	Fairgrounds
22 Ponto Lake Twp	Town Hall
23 Remer City	Near Soo Line Trail
24 Remer Twp	Lone Wolf
25 Shingobee Twp	Y-Mart
26 Sylvan Twp	Corner Store
27 Trelipe Twp	Slagle Transfer Site
28 Walker	Walker Home Center
29 Woodrow Twp	Woodrow Twp Gravel Pit



North Central Materials Exchange - MATEX



Cass, Crow Wing, and Hubbard counties have teamed up with the Minnesota Materials Exchange program to offer exciting new opportunities to reduce waste and to reuse materials in northern Minnesota.

The materials exchange (MATEX) program is based on the concept that one company's waste product could be another company's raw material. Through a Materials Exchange, companies and organizations can reduce their waste disposal costs by finding other companies, organizations, schools or individuals which could use these waste or surplus materials in their processes or programs. The main purpose of the exchange is to connect businesses and organizations that have reusable goods with those who need them.

Individuals may participate as well. Check your garbage for reusable items such as: furniture, working appliances, doors, windows and other construction materials, cabinets, lawn mowers, bicycles, etc..

Contact Info
 The MATEX office is located in the Cass County Environmental Service Department at the Cass County Courthouse, Box 3000, Walker, MN 56484.
 For further information on availability or to list items call: 218-547-7428 or email: bsailer.matex@co.cass.mn.us
 For statewide listings go to www.mnexchange.org

Disclaimer
 The North Central Materials Exchange (MATEX) is not responsible for any warranty, expressed or implied, as to the accuracy of the material description, or the suitability of any material offered through this exchange. It is the legal responsibility of each party to determine whether a listed material is a hazardous waste or a hazardous material. Both hazardous and solid waste must be managed in accordance with all relevant regulations and laws. The North Central Materials Exchange (MATEX) reserve the right not to list a material, to delist a material or to edit information provided by the listing party.